

# AUSSIE RED SIRE DIRECTORY 2012

## BEAULANDS MEESON - ET



NASIS CODE: MEESON

PT PRICE: \$10.00 + GST PER DOSE / OUTSIDE PT PRICE: \$12.00 + GST PER DOSE



Brad Gavenlock

Sire: K Lens 1678

Dam: Beaulands Aks Hilda 2 - EX90

27M 6,251L 4.27% 267F 3.15% 197P  
42M 7,503L 4.00% 300F 3.23% 242P  
52M 8,398L 4.30% 361F 3.37% 283P  
62M 8,827L 4.01% 354F 3.38% 298P  
76M 10,577M 4.25% 449F 3.36% 355P  
88M 10,815M 3.99% 431F 3.28% 355P

MGS: Fyn Aks

MGD: Beaulands Christian Hilda

26M 6,981M 4.01% 280F 3.45% 241P  
35M 7,085M 4.66% 330F 3.66% 259P  
46M 7,640M 4.27% 326F 3.27% 250P  
57M 6,921M 4.55% 315F 3.66% 253P  
67M 8,143M 4.05% 330F 3.39% 276P

~Dark Red K Lens son from Beaulands Aks Hilda 2 - EX90 who is much admired by all visitors to the Beaulands herd for her tremendous Type and outstanding Production.

~Ideal bull for Cross Breeding programs and will improve Daughter

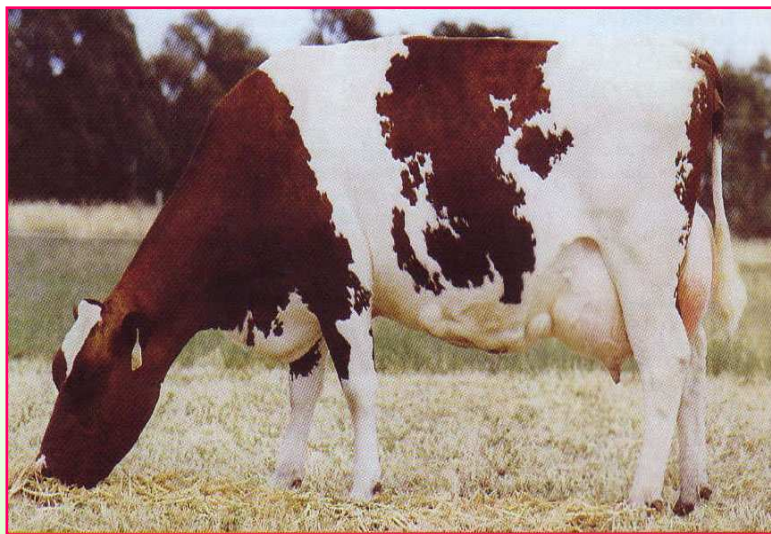
Dam: Beaulands Aks Hilda 2 - EX90

## WAIKATO FARM LIONRED



NASIS CODE: LIONRED

PT PRICE: \$10.00 + GST PER DOSE / OUTSIDE PT PRICE: \$12.00 + GST PER DOSE



Dam: Bosgowan Primula 278 - EXC 91

Sire: A Linne

Dam: Bosgowan Primula 278 - EXC 91

98M 305D 9,130L 4.8% 437F 3.5% 319P  
85M 305D 9,029L 5.2% 465F 3.6% 324P  
74M 288D 9,319L 4.8% 443F 3.5% 329P  
62M 293D 8,962L 4.7% 421F 3.6% 326P  
50M 305D 9,032L 5.1% 464F 3.7% 334P  
36M 305D 8,299L 5.0% 415F 3.6% 296P  
24M 305D 7,124L 4.9% 350F 3.5% 251P

MGS: 882 Torpane

MGD: Bosgowan Primula 103

85M 298D 8,449L 4.5% 376F 3.4% 290P  
73M 300D 7,136L 4.0% 289F 3.5% 251P  
61M 299D 7,603L 3.8% 288F 3.5% 267P  
49M 300D 8,043L 3.9% 314F 3.5% 280P  
37M 300D 6,725L 4.0% 268F 3.5% 235P  
25M 290D 6,064L 4.0% 244F 3.6% 216P

~A Linne son who hails from one of the best conformation cows in the Aussie breed - Bosgowan Primula 278 EX91 who is a high Production cow with outstanding Components. Lionred is a maternal brother to ARBBONJOVI who is the No.1 APR Aussie Red Sire.

~Ideal bull for Cross Breeding programs and will improve Daughter Fertility and SCC.

### Breed Information

Aussie Reds combine an extensive infusion of Scandinavian Red genetics with other Australian Red breeds such as Ayrshire, Dairy or Milking Shorthorn, Illawarra, or Red and White Holstein. The Aussie Reds offer a commercial animal that can meet guidelines which require quality of milk for the present day market payments. With careful selection, comprehensive data on sires from Scandinavia of heritable traits such as disease resistance, ease of calving, fertility etc, is also available. This information has only been seriously considered in other countries around the world quite recently, but the Scandinavian countries have had breeding values on these traits for many years.

### Breed Characteristics

Healthy, productive, feed efficient, genetically diverse, highly fertile dairy cows that are capable of producing and surviving under a wide range of production systems and environments.



AGRI-GENE

Agri-Gene Pty Ltd

123-125 Tone Road, Wangaratta Victoria 3677

Ph: 03 5722 2666 Fax: 03 5722 2777 Email: info@agrigen.com.au Website: www.agrigen.com.au



AGRI-GENE